

ERRATUM

Volume **158**, Number 1 (2000), in the article “Compact Implicit MacCormack-Type Schemes with High Accuracy,” by R. Hixon and E. Turkel, pages 51–70 (doi:10.1006/jcph.1999.6406): On page 58, the real parts of Eqs. (34) and (35) are incorrect. The correct value is

$$\frac{(1/18) \sin(2\theta \Delta x) + (16/18) \sin(\theta \Delta x)}{(5/9 + (4/9) \cos(\theta \Delta x))}.$$

Figure 1 provided here shows the numerical wavenumber due to the correct value, and Fig. 2 shows the numerical wavenumber due to the incorrect value in Eqs. (34) and (35). The authors (R. Hixon and E. Turkel) thank Khalid Hosny, College of Computers and Informatics, Zagazig University, Zagazig, Egypt, for pointing out the error.

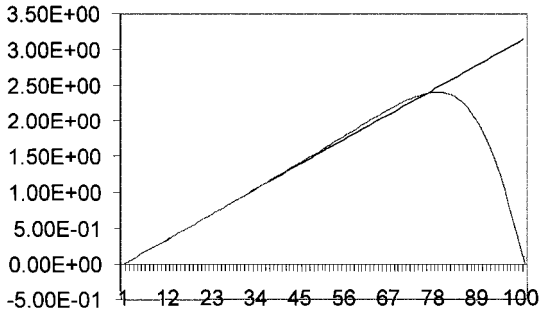


FIGURE 1

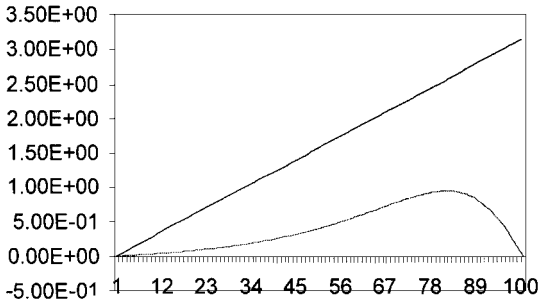


FIGURE 2